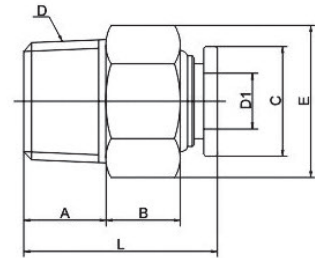


PC- 不锈钢螺纹直通

规格	A	B	C	D	D1	E	L
PC4-M5	8	6	9.8	M5	4.2	10	19
PC4-M6	9	6	9.8	M6	4.2	10	21
PC4-01	8	6	9.8	1/8"	4.2	10	19
PC4-02	9	6	9.8	1/4"	4.2	14	21
PC4-03	9	7	9.8	3/8"	4.2	17	22
PC6-M5	9	8	12	M5	6.2	12	21
PC6-M6	9	7	12	M6	6.2	12	21
PC6-01	9	8	12	1/8"	6.2	12	21
PC6-02	9	7	12	1/4"	6.2	14	21
PC6-03	9	8	12	3/8"	6.2	17	23
PC6-04	13	7	12	1/2"	6.2	22	25
PC8-01	8	11	13.8	1/8"	8.2	14	25
PC8-02	9	8	13.8	1/4"	8.2	14	24
PC8-03	9	7	13.8	3/8"	8.2	17	22
PC8-04	13	7	13.8	1/2"	8.2	22	26
PC10-01	8	12	15.8	1/8"	10.2	17	26
PC10-02	10.8	12	15.8	1/4"	10.2	17	27
PC10-03	9	8	15.8	3/8"	10.2	17	23
PC10-04	12.5	6.5	15.8	1/2"	10.2	22	25
PC12-01	8	11.6	19	1/8"	12.2	19	26
PC12-02	9	12	19	1/4"	12.2	19	27
PC12-03	9	9	19	3/8"	12.2	19	25
PC12-04	13	17	19	1/2"	12.2	22	26
PC14-02	9	11	20	1/4"	14.2	22	26
PC14-03	10	12.8	20	3/8"	14.2	22	28
PC14-04	13	9	20	1/2"	14.2	22	29
PC16-02	9	12.5	22	1/4"	16.2	24	28
PC16-03	9	12	22	3/8"	16.2	24	28
PC16-04	13	7	22	1/2"	16.2	24	27



PL- 不锈钢螺纹弯头

规格	A	B	C	D	D1	E	F	H
PL4-M5	6	23.7	7.5	M5	4.2	12	9.8	28.7
PL4-M6	7	24.5	7	M6	4.2	12	9.8	29.5
PL4-01	6	23.7	7.5	1/8"	4.2	12	9.8	28.7
PL4-02	7	24.5	7	1/4"	4.2	14	9.8	29.5
PL6-M5	6	24	7	M5	6.2	12	12	30
PL6-M6	7	26	7	M6	6.2	12	12	32
PL6-01	6	24	7	1/8"	6.2	12	12	30
PL6-02	7	26	7	1/4"	6.2	14	12	32
PL6-03	8.5	28	7.6	3/8"	6.2	17	12	34
PL6-04	11	28	7	1/2"	6.2	22	12	34
PL8-01	6	26	7	1/8"	8.2	12	14	33
PL8-02	7	26	7	1/4"	8.2	14	14	33
PL8-03	8.5	28	8	3/8"	8.2	17	14	35
PL8-04	11	29	7	1/2"	8.2	22	14	36
PL10-01	6	25.5	7	1/8"	10.2	12	16	34
PL10-02	7	26.5	7	1/4"	10.2	14	16	35
PL10-03	8.5	27.5	7	3/8"	10.2	17	16	36
PL10-04	11	31.5	7	1/2"	10.2	22	16	40
PL12-02	7	27.5	7	1/4"	12.2	14	18	37
PL12-03	8.5	26.5	7	3/8"	12.2	17	18	36
PL12-04	11	31	7	1/2"	12.2	22	18	40.5
PL14-02	7	31	7	1/4"	14.2	14	20	42
PL14-03	8.5	31	7	3/8"	14.2	17	20	42
PL14-04	11	34	7	1/2"	14.2	22	20	45
PL16-02	7	30.5	7	1/4"	16.2	14	22	42
PL16-03	8.5	30.5	7	3/8"	16.2	17	22	42
PL16-04	11	35	7	1/2"	16.2	22	22	46.5

