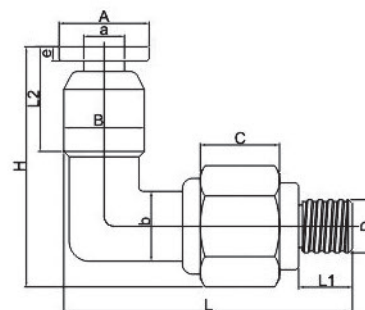


PL- 不锈钢 G 螺纹弯头

规格	A	a	B	b	C	D	e	H	L2
PL4-G01	10	4.2	10	8	7	G1/8	2	28	15
PL6-G01	12	6.2	12	10	6	G1/8	2	30.5	15
PL6-G02	12	6.2	12	10	8	G1/4	2	31	14.5
PL6-G03	12	6.2	12	10	6	G3/8	2	33	15
PL6-G04	12	6.2	12	10	7	G1/2	2	34	15
PL8-G01	14	8.2	14	12	6	G1/8	2	30.5	15.5
PL8-G02	14	8.2	14	12	8	G1/4	2	33	16
PL8-G03	14	8.2	14	12	6	G3/8	2	34	15.5
PL8-G04	14	8.2	14	12	7	G1/2	2	35	15.5
PL10-G02	16	10.2	17	15	8	G1/4	2	35	16
PL10-G03	16	10.2	17	15	6	G3/8	2	35	15.5
PL10-G04	16	10.2	17	15	7	G1/2	2	37	16
PL12-G02	18	12.2	19	17	7	G1/4	2	35.5	16
PL12-G03	18	12.2	19	17	6	G3/8	2	36	15
PL12-G04	18	12.2	19	17	7	G1/2	2	37	16
PL4-M5	10	4.2	10	8	7	M5*0.8	2	29	9
PL4-M6	10	4.2	10	8	7	M6*0.8	2	29	9
PL6-M5	12	6.2	12	10	7	M5*0.8	2	29	10
PL6-M6	12	6.2	12	10	7	M6*0.8	2	29	10



PLF- 不锈钢内螺纹弯头

规格	L1	L2	L3	H	S	T	D1	D2
PLF4-M5	17.5	15	-	5	12	M5	Ø8	Ø4
PLF4-M6	17.5	15	-	5	12	M6	Ø8	Ø4
PLF4-01	17.5	20	-	8	14	RC1/8	Ø10	Ø4
PLF4-02	17.5	22	-	9.5	17	RC1/4	Ø10	Ø4
PLF6-M5	24	24	-	8	12	M5	Ø12	Ø6
PLF6-M6	24	24	-	8	12	M6	Ø12	Ø6
PLF6-01	24	24	-	8	14	RC1/8	Ø12	Ø6
PLF6-02	24	21	-	9.5	17	RC1/4	Ø12	Ø6
PLF6-03	24	22	-	10.5	19	RC3/8	Ø12	Ø6
PLF6-04	24	23	-	12.5	21	RC1/2	Ø12	Ø6
PLF8-01	26.5	19	-	8	14	RC1/8	Ø14	Ø8
PLF8-02	26.5	21	-	9.5	17	RC1/4	Ø14	Ø8
PLF8-03	26.5	22	-	10.5	19	RC3/8	Ø14	Ø8
PLF8-04	26.5	23	-	12.5	24	RC1/2	Ø14	Ø8
PLF10-01	31	22	-	8	14	RC1/8	Ø16	Ø10
PLF10-02	31	25	-	9.5	17	RC1/4	Ø16	Ø10
PLF10-03	31	26	-	10.5	19	RC3/8	Ø16	Ø10
PLF10-04	31	27	-	12.5	24	RC1/2	Ø16	Ø10
PLF12-02	32.5	27.5	-	9.5	17	RC1/4	Ø18	Ø12
PLF12-03	32.5	28.5	-	10.5	19	RC3/8	Ø18	Ø12
PLF12-04	32.5	29.5	-	12.5	24	RC1/2	Ø18	Ø12
PLF14-02	-	-	-	-	-	-	-	-
PLF14-03	-	-	-	-	-	-	-	-
PLF14-04	-	-	-	-	-	-	-	-
PLF16-02	-	-	-	-	-	-	-	-
PLF16-03	-	-	-	-	-	-	-	-
PLF16-04	-	-	-	-	-	-	-	-

